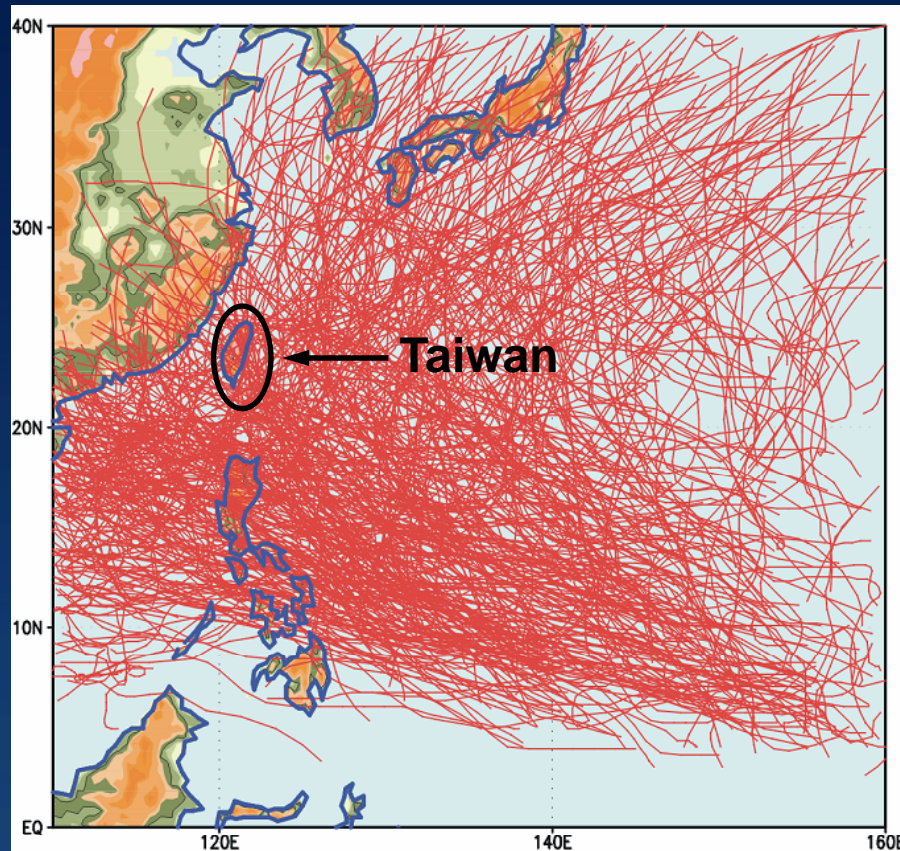


DICEISION-MAKING INFORMATION SUPPORT SYSTEM FOR FLOOD EMERGENCY RESPONSE

Speaker: Chin-lien Yen

2010.5.6

Typhoon disasters in Taiwan



1980-2006 Typhoon Tracks

- 3.6 Typhoons hit Taiwan per year
- Economic loss due to Typhoon disaster is about USD\$ 500 M per annum



▲ Street Scene ▼



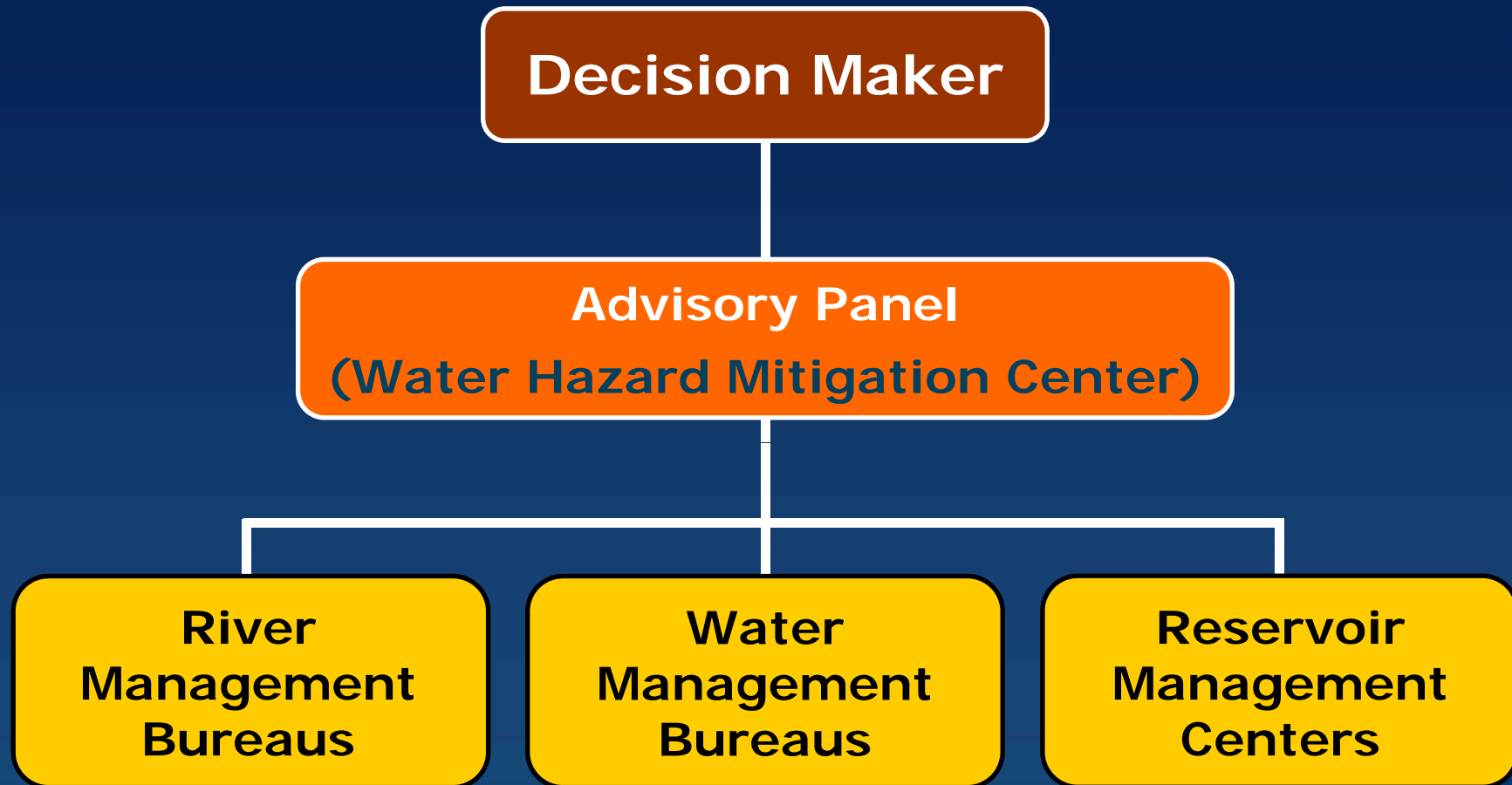
Taipei MRT System

Inundation of Taipei metropolis in Typhoon Nari in 2001

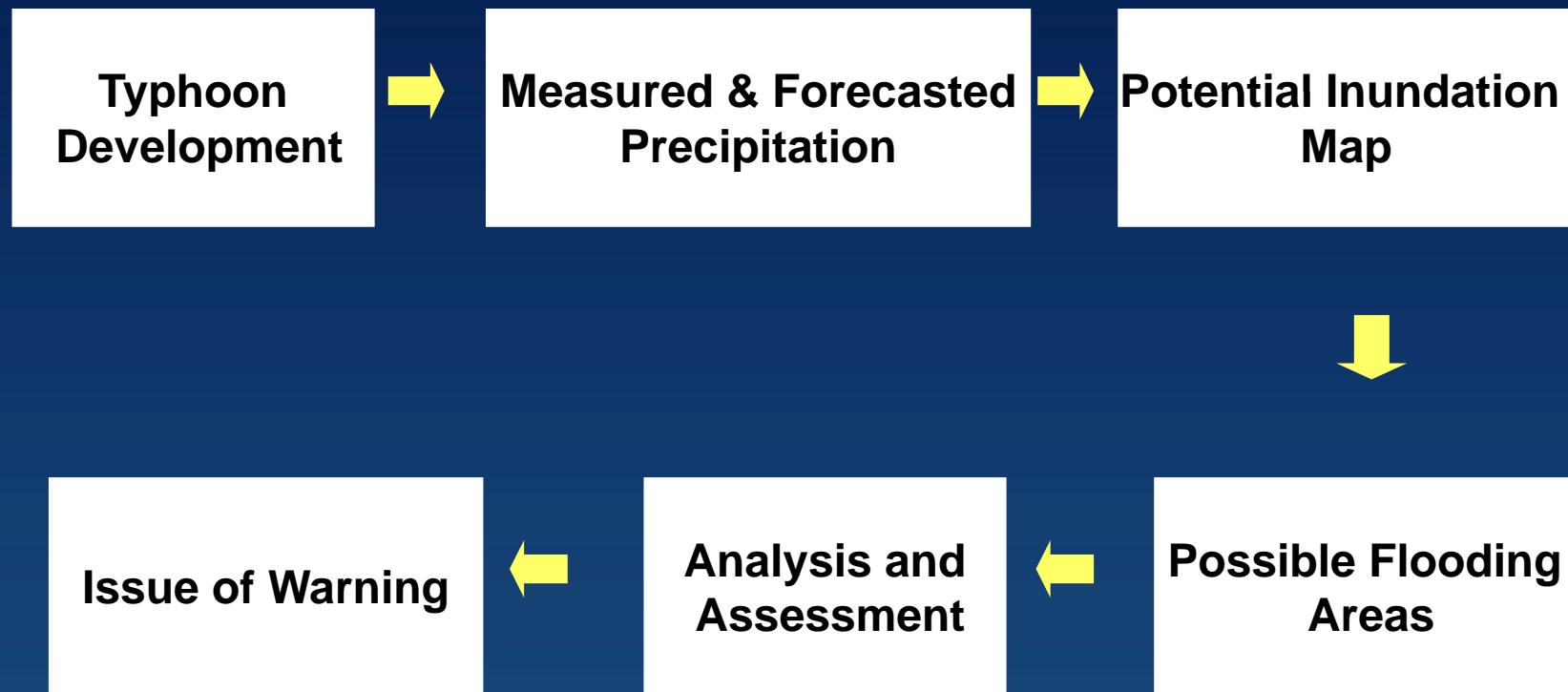
Major Problems on Flood Emergency Operations are:

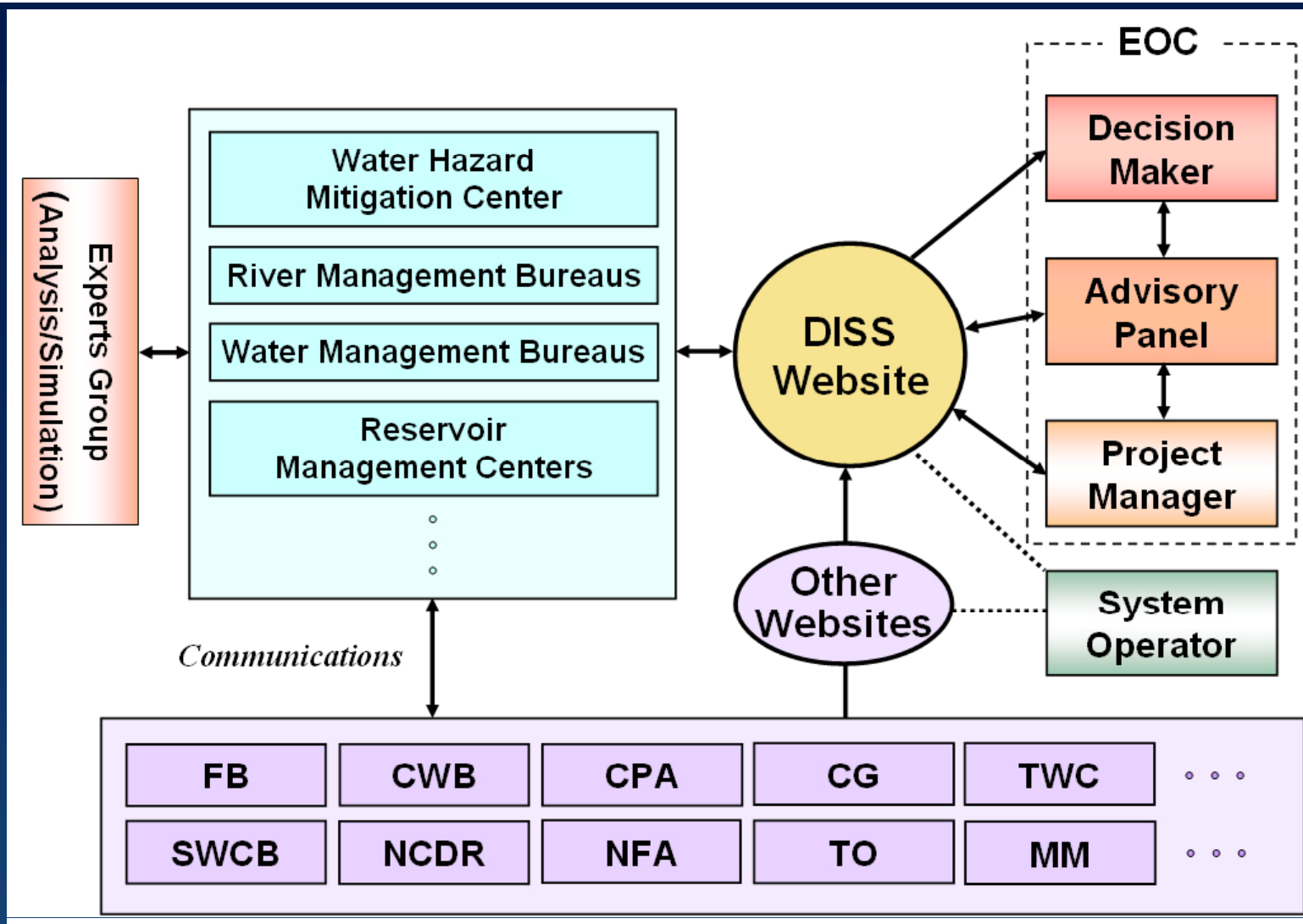
- 1. The units responsible often have difficulties in providing sufficient and efficient information for decision maker's reference.**
- 2. Lack of coordination in formulating the appropriate plans to deal with flood disaster.**

Measure 1: Strengthening of Response System



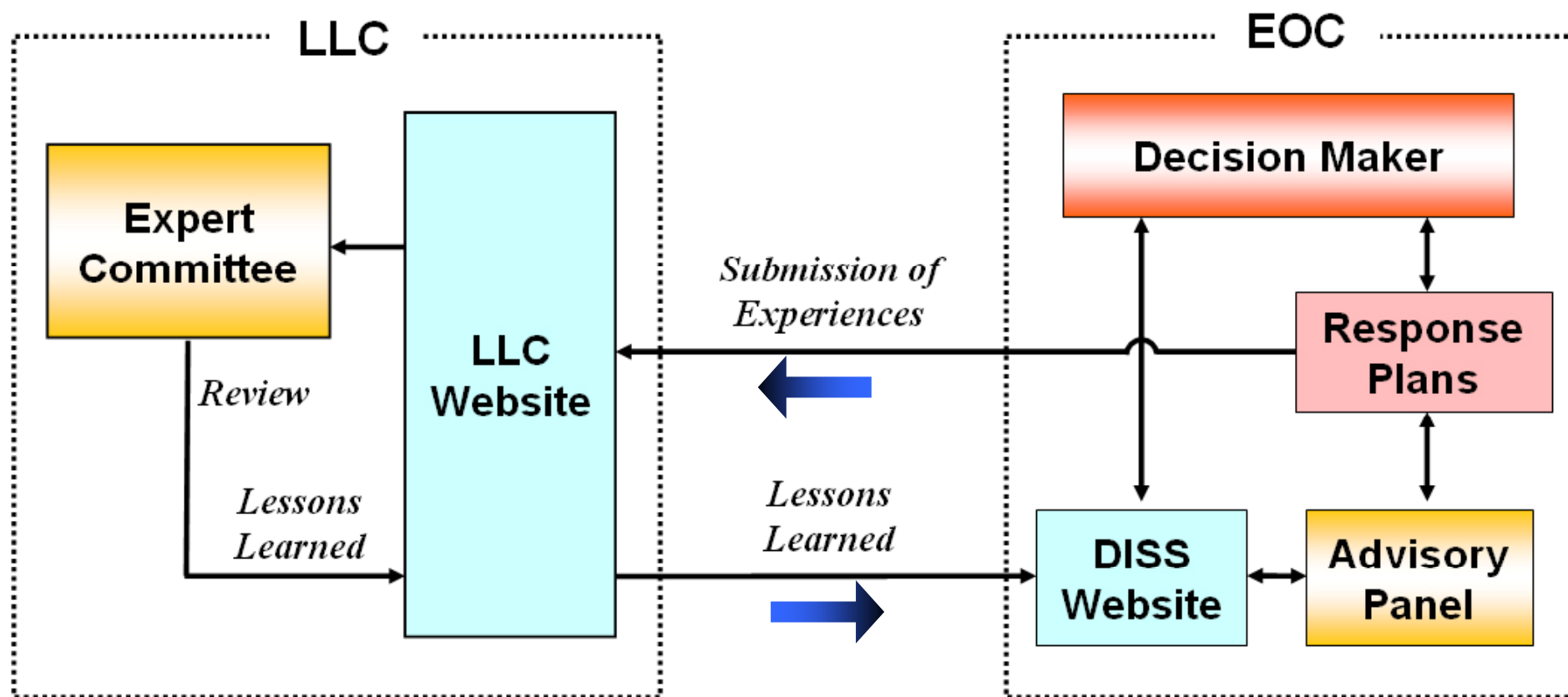
Measure 2: Define Information Needs in Emergency Operation



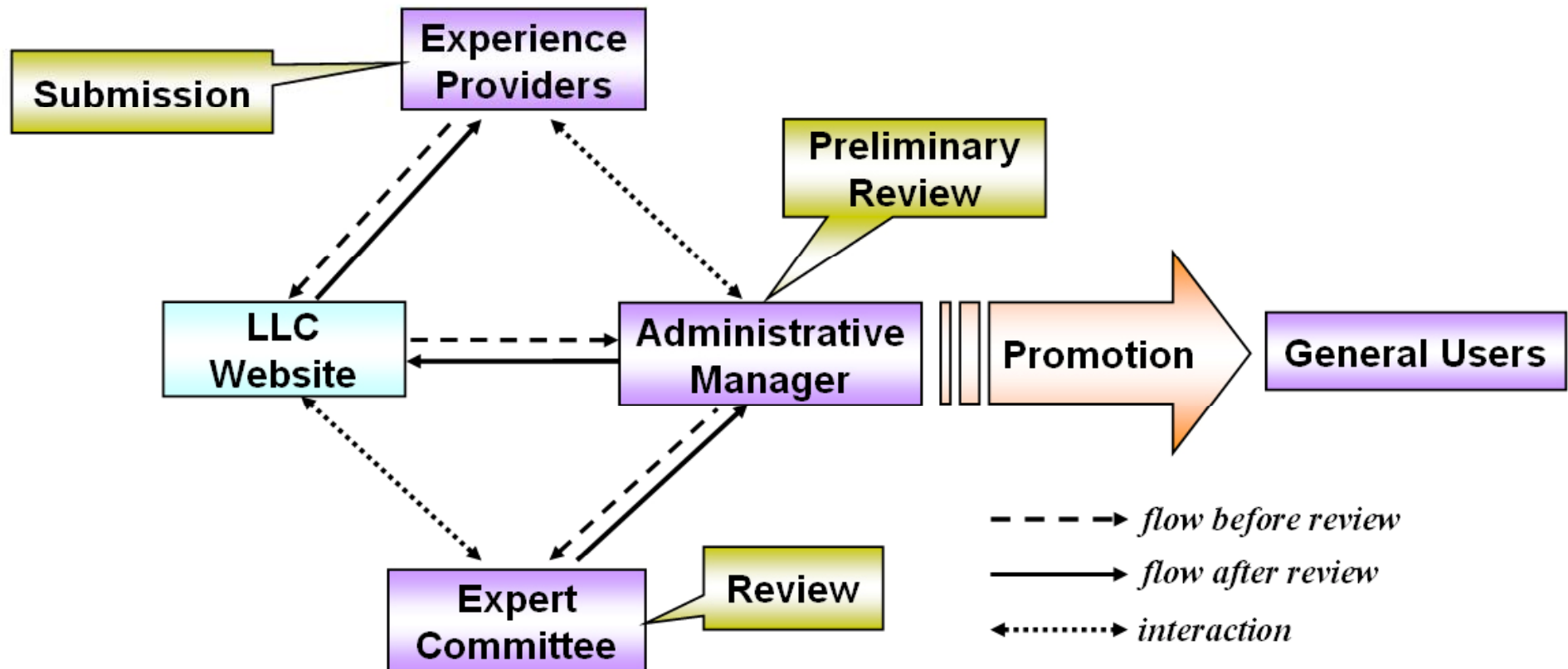


FB: Forestry Bureau, SWCB: Soil and Water Conservation Bureau, CWB: Central Weather Bureau,
 NCDR: National Sc. and Tech. Center for Disaster Reduction, CPA: Construction and Planning Agency,
 NFA: National Fire Agency, CG: City(County) Government, TO: Township Office,
 TWC: Taiwan Water Corporation, MM: Mass Media

Operational Framework of DISS



Relationship between LLC and DISS



Flow Chart of LLC Operations

FINIS

Thanks for Your Attention