

# Design and Management of Emergency Shelters & Interim Housing

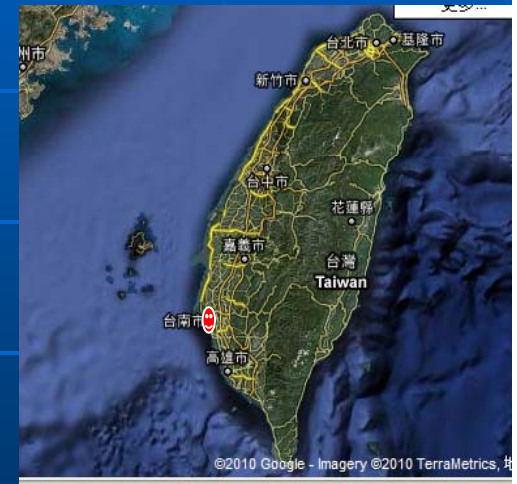
George C. Yao, Prof.

Po-Tsong Chen, Post-Doc.

*Department of Architecture*

*National Cheng Kung University (NCKU)*

Tainan, Taiwan



# Introduction

---

**Problems arose in Typhoon Morakot:**

**a. Unsuccessful evacuation**

**b. Unnecessary suffering in shelters**

**c. Inadequate interim housing**

**d. Impaired recovery process**

**➔ Public criticism of government**



## Taiwan's leader takes blame for typhoon response

August 17, 2009 Updated 1425 GMT (2225 HKT)

READ

VIDEO

PHOTOS

MAP

### STORY HIGHLIGHTS

- Taiwan's leader says he takes blame for slow typhoon response
- Ma Ying-jeou has refused to stand down over criticism
- Typhoon killed 123 people in Taiwan and left many thousands homeless

Next Article In World »

SEE HOW NEC  
PARTNERED  
WITH  
NTT COM ASIA  
TO PROVIDE  
ENERGY-  
SAVING

### STORY HIGHLIGHTS

- Taiwan's leader says he takes blame for slow typhoon response
- Ma Ying-jeou has refused to stand down over criticism
- Typhoon killed 123 people in Taiwan and left many thousands homeless

Next Article In World »



# 1. Emergency Shelter

---



Shelter A



Shelter A



Shelter B

**Living condition is bad !**



# 1. Emergency Shelter



**First Aid Station**



**Public Toilet**



**Public Bathroom**



**Indoor Clothesline**



# 1. Emergency Shelter

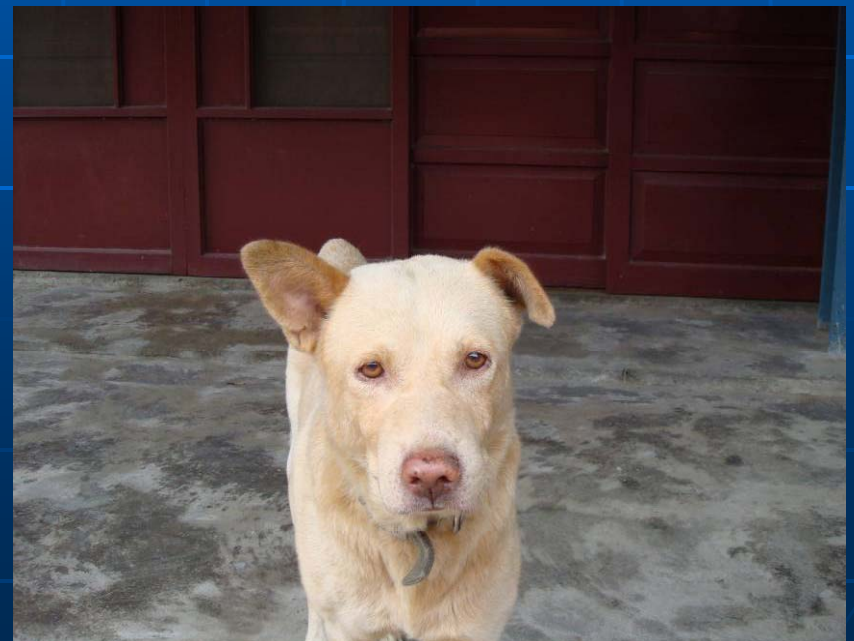
---



**Elderly Care Problems**



**Child Care Problems**



**Pet Shelter Problems**

# Identified Problems in the Emergency Shelters

---

## HARDWARE

1. Adequate pre-disaster planning and design of shelter space is important for a more friendly shelter environment.

## SOFTWARE

2. Re-organization of disaster management for a more efficient administration is important.
3. A method for caring of pets.





## 2. Interim Housing



**Reconstruction of Old Military Barracks**

**New Temporary Housing Units**

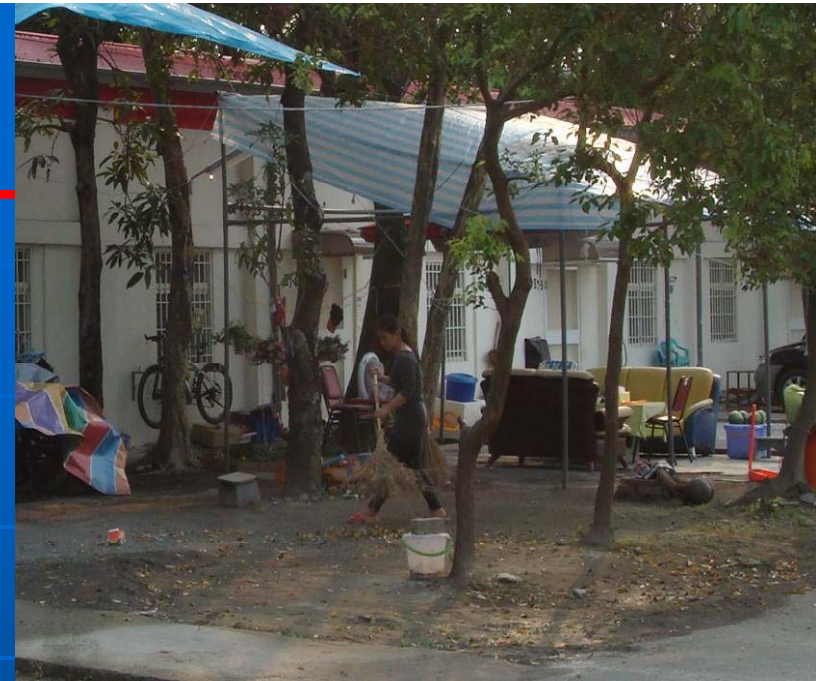


## 2. Interim Housing

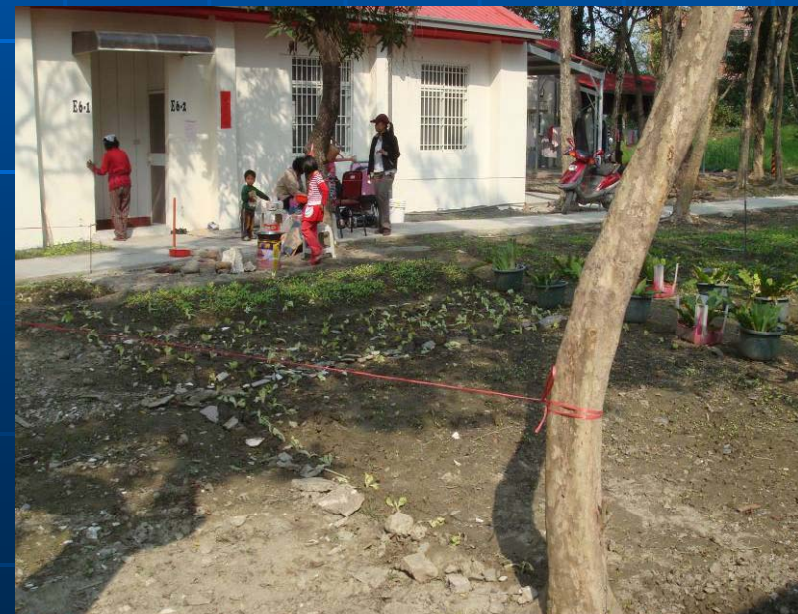


**Outdoor Barbecue**

**Living Conditions of  
Residents after Moving into  
the Barracks**



**Cleaning the Courtyard**



**Vegetable Garden**



## 2. Interim Housing



**Courtyard**

**Living Conditions of  
Residents After Moving  
into New Interim  
Housing Facilities**



**Gathering Outdoors**



**Laundry Facilities**



# Identified Problems in Interim Housing

---

1. Development and management plan for interim housing
2. Appropriate community rules are needed
3. The provision of adequate social support

*Thank you for your attention!*