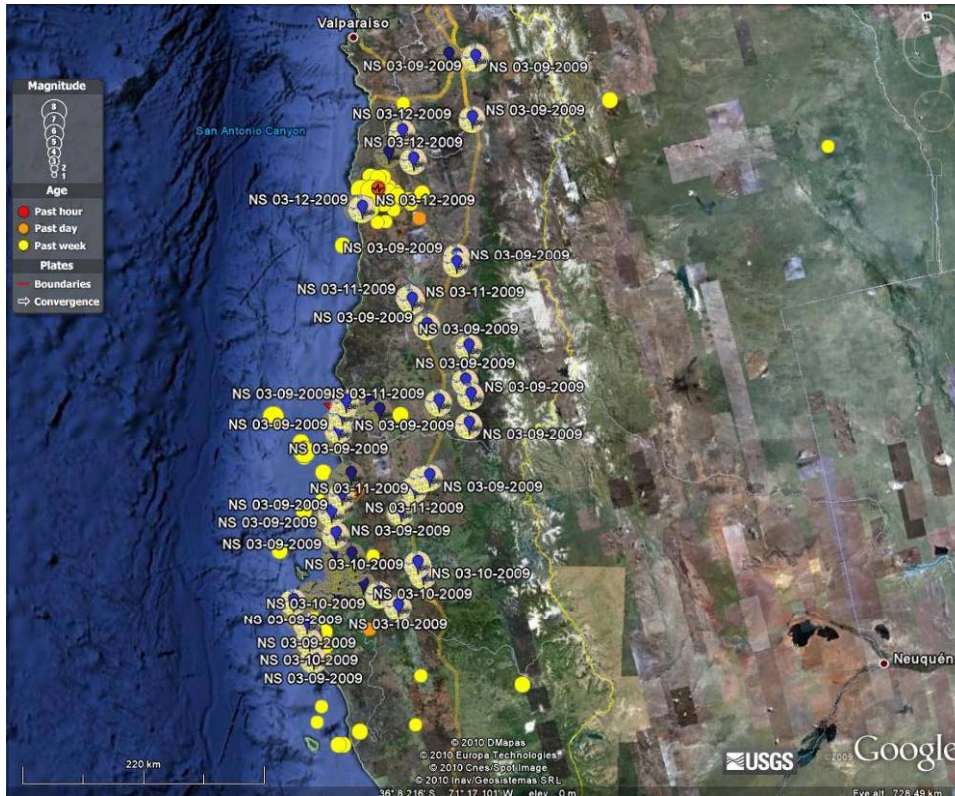
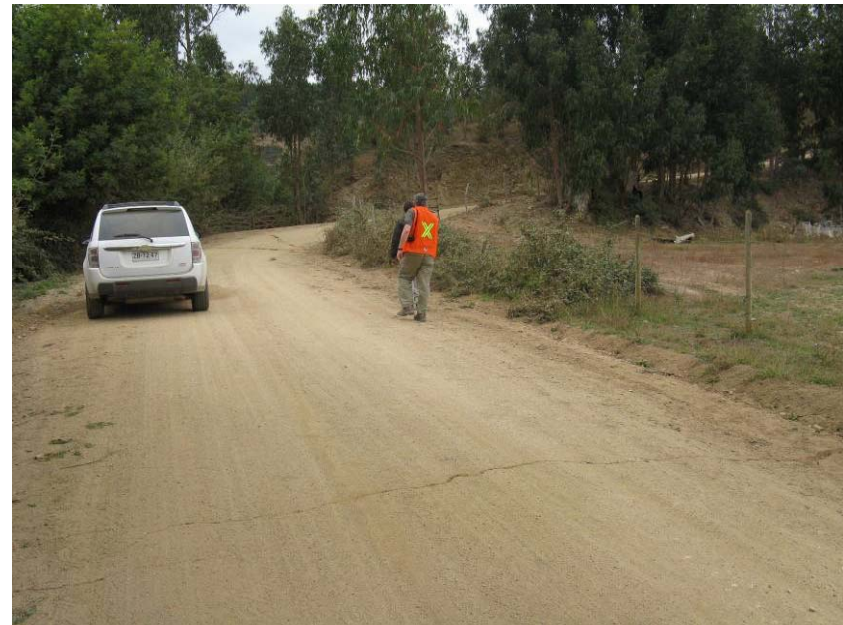




Geo-engineering Extreme Events Reconnaissance *Turning Disaster into Knowledge*

www.geerassociation.org

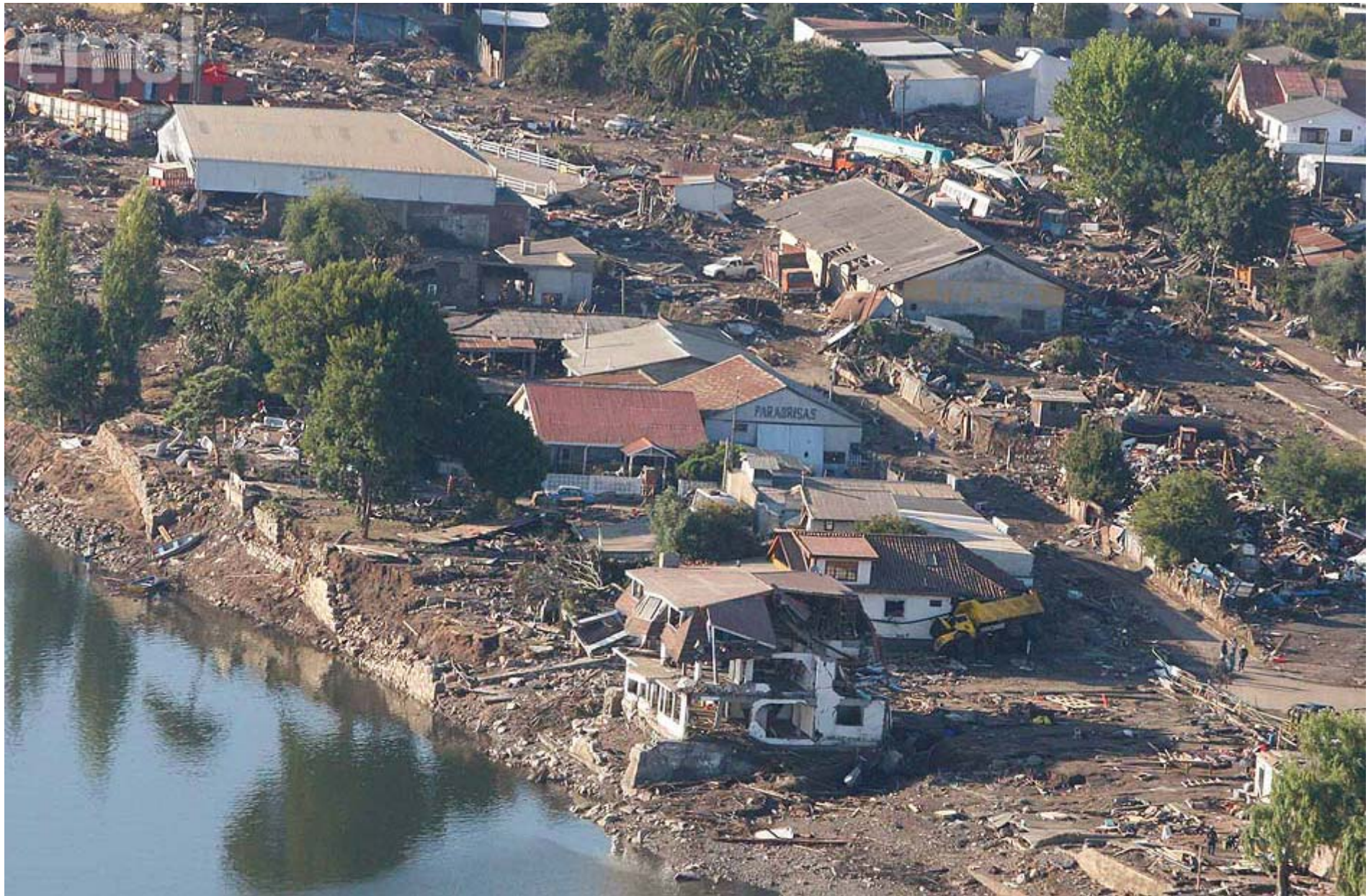
- Google Earth
- Aerial surveys
- Ground work
- GPS tracking throughout



Talca - UMR and Adobe



Chile 2010



Wenchuan 2008

Photo by K. Mosalam



Wenchuan 2008

Photo by K. Mosalam



Post-Event

- Response planning has to be event type specific
 - The resources have to be technologically and socially suitable
 - The response management must be decisive and clearly visible at all times
 - Requires real time information
-
- What do we need? - Research or Political/Economic Will?