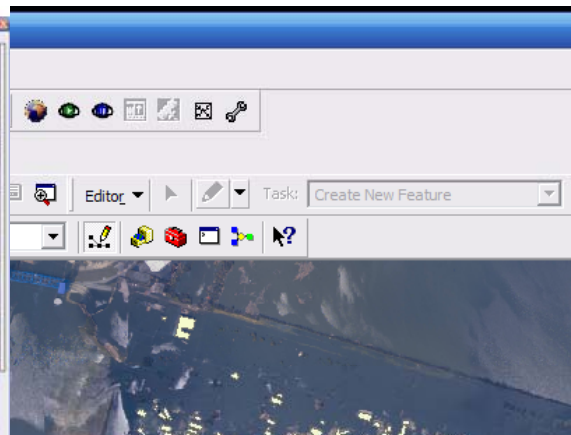
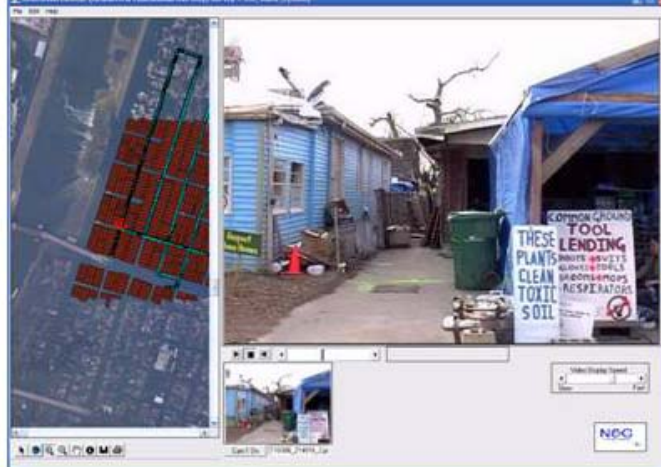
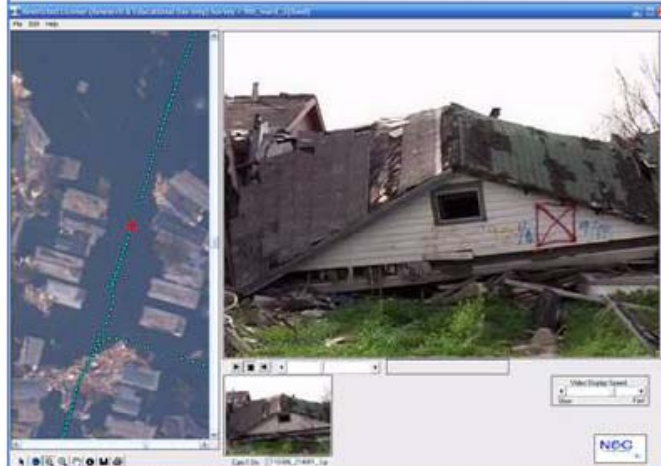
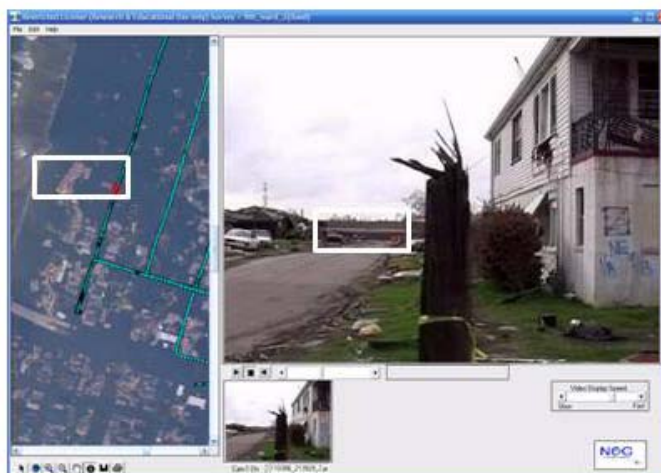


Hurricane Katrina

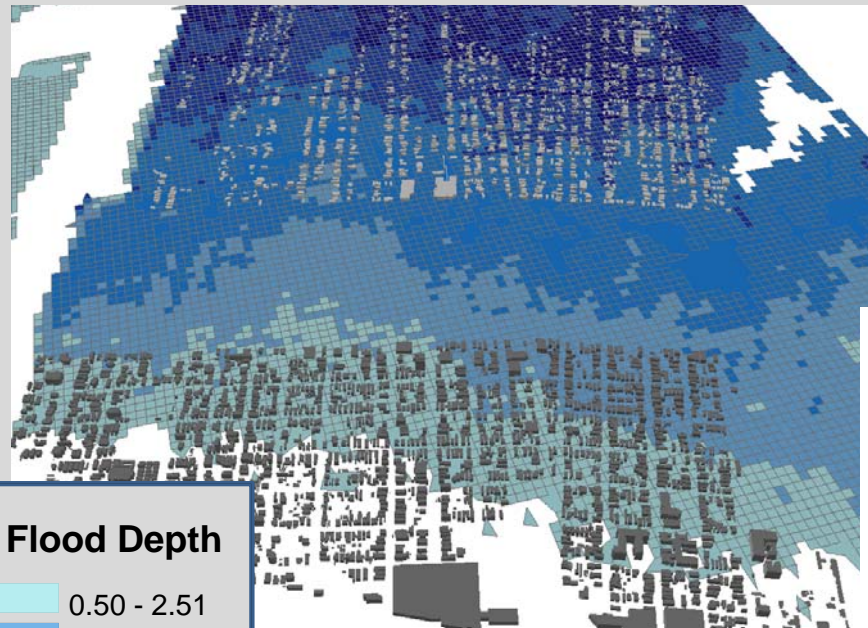
S & R / Damage Assessment / Neighborhood Recovery



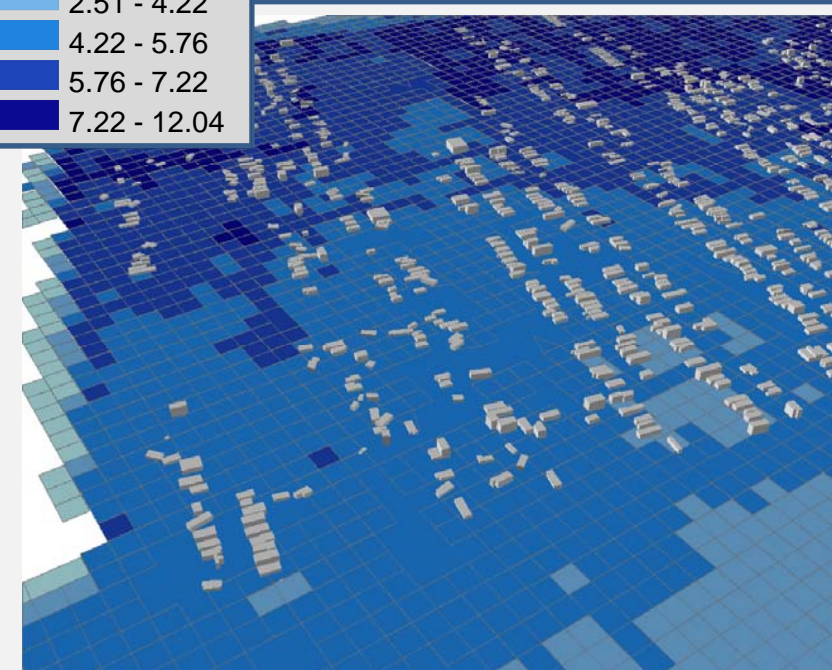
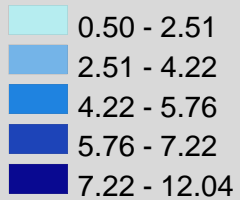


Lower 9th Ward soon after Katrina

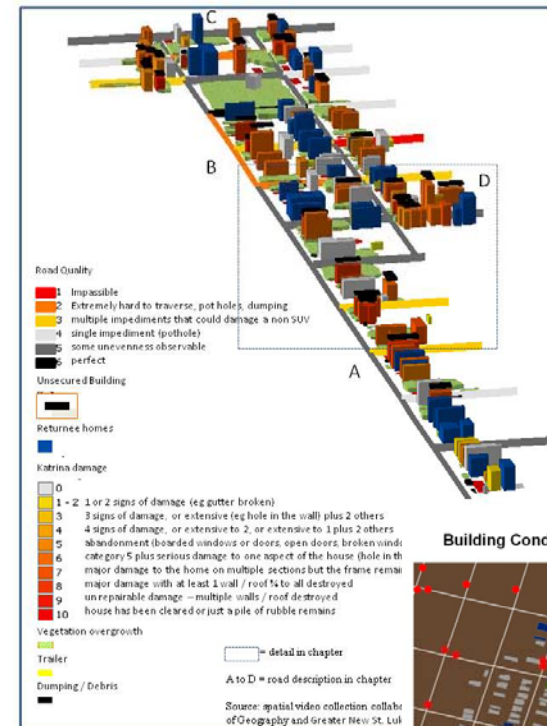
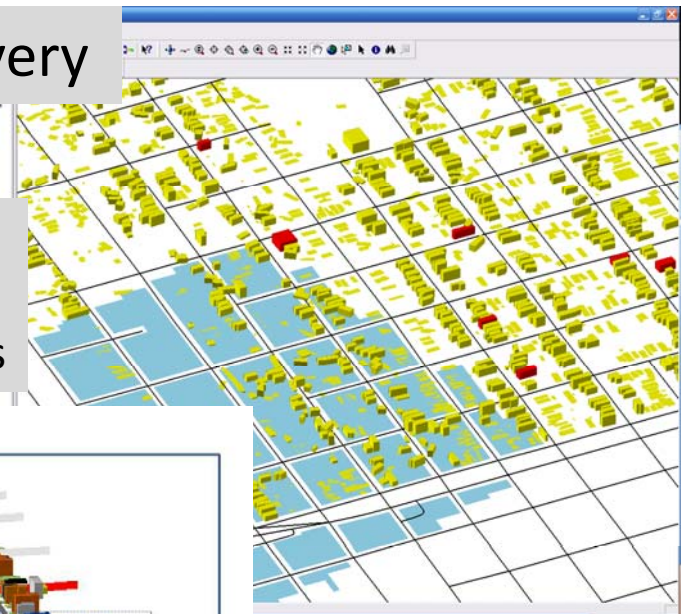
From Damage Assessment to Monitoring Recovery



Flood Depth

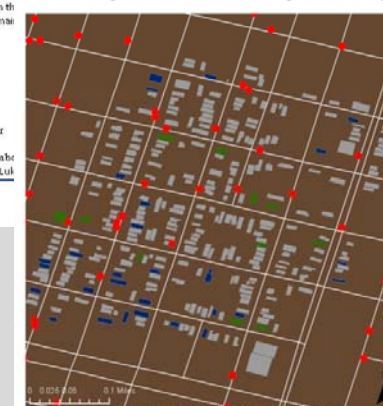


Make it Right
&
Church Locations



Neighborhood
Association
Recovery Map

Building Conditions and Average Rebuilding Gaps in the Lower 9th Ward



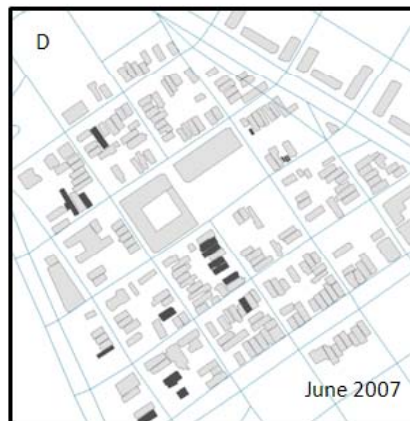
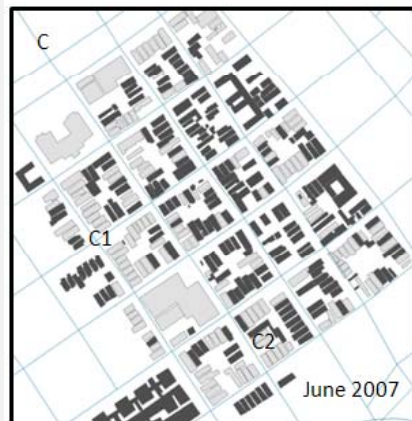
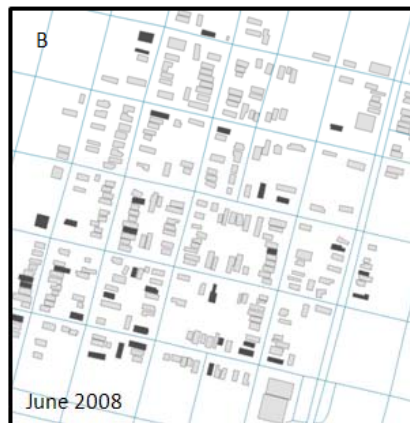
Resource gaps and properties held by the Louisiana Land Trust mean that fewer than 10% of homes in this 16-block area are occupied and only 5% show active signs of rebuilding.



PolicyLink
Advocacy Map

Source: Building condition data collected by A. Curtis, Dept of Geography, USC, June 2008.
Average Rebuilding Gap calculated from Road Home data obtained from the Louisiana Recovery Authority, Oct 2008.
Louisiana Land Trust properties represent homes sold to the State through the Road Home. Data from LRA, Oct 2008.

Map Created by PolicyLink 2009



 Returnee property
  Abandoned property

